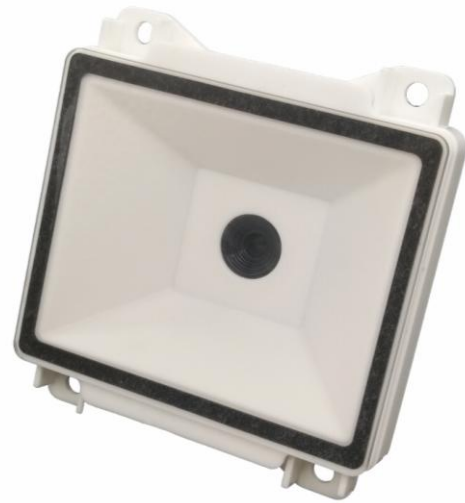


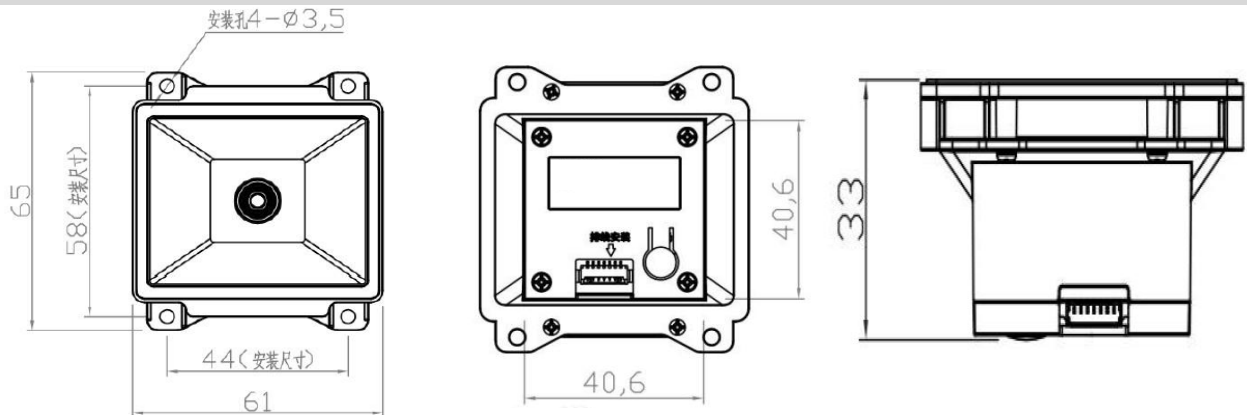
HW-1870 (HD)

FEATURES & BENEFITS

- Global shutter
- 32-bit high performance CPU, 1GHz frequency
- Decoding min barcode density: 4mil
- Support 1D/2D barcode on paper and screen
- Extremely high sensitivity, quick scanning
- Motion tolerance up to 50cm/s for code 128(25mil)
- Interface RS232 and USB(HID, COM)
- Decoding at low and high brightness environment
- Manual, Auto-sensing, Continuous, Host Mode
- Large window, small size, fast convenient installation



Installation Dimensions



Application Scenario



Ticket on bus



Turnstile



Vending machine



Ticket on cinema



Cabinet for logistics



self order machine(KFC)

Technical Specification

HW-1870 Parameters

Reading performance	Image Sensor	CMOS		
	Exposure	Global shutter		
	Resolution	300 thousand	640*480pixels	60fps
	Decoding capacity	Support paper and screen barcodes		
		2D: QR, Micro QR, PDF417, Micro PDF417, Data Matrix, Maxicode, Aztec, GM code etc.		
		1D: Code 128, EAN-13, EAN-8, Code 39, UPC-A, UPC-E, Codabar, Interleaved 2 of 5, ITF-6, ITF-14, ISBN, Code 93, UCC/EAN-128, GS1 Databar, Matrix 2 of 5, Code 11, Industrial 2 of 5, Standard 2 of 5, Plessey, MSI-Plessey etc. all normal 1D		
	Precision	4mil		
	Light Source	LED(630nm±10nm)		
	View Angle	76.7° (H) x53.4° (V)		
	Scan Angle	Rotation360° ,tilt±65° ,skew±65°		
	Min Contrast	25%		
	Motion Tolerance	50cm/s Code 128(25mil)		
	IR Sensing	Support		
Mechanical and electrical	Typical DOF	10-90mm(5mil code39)	10-150mm(10mil code39)	
		10-110mm(5mil UPCA)	10-120mm(10mil UPCA)	
		25-150mm(15mil QR)	10-40mm(8mil QR)	
		12-40mm(5mil PDF417)	11-38mm(8mil Data Matrix)	
		Performance may be impacted by bar code quality and environmental conditions		
	Interface	RS232(DB9..),USB(HID, COM)		
Working Voltage	DC 5V			
Current	360mA(Max)	220mA(working)	5mA(wait)	
Dimensions	65*61*33mm			
Weight	35g(without cable)			
Indication	Buzzer&LED			
Environment Request	Working Tem	-20~60℃		
	Storage Tem	-40~70℃		
	Humidity	5%-95%(Non-condensing)		
	Light Immunity	0~100,000Lux		
	Drop Test	1.8M(6ft)		

Pin definitions

There are USB and RS232 cable

1. USB connector is USB type A, plug and play
2. RS232 cable is a DB9 connector(for data)+USB type A connector(for power)
DB9 pin order is international standard

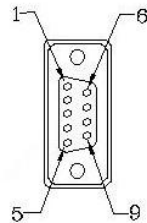


Pin definition:

Pin2: RXD (receiving signal)

Pin3: TXD (transmit signal)

Pin5: GND (Ground)



The Pin order

PIN#	Signal Name	I/O	Remarks
1	Shielding net	-	Shielding net
2	GND black	-	Ground
3	+5V red	-	VCC
4	RXD green	Input	RS232 receiver
5	TXD white	Output	RS232 transmission
6	USB_D+ green	Input/Output	USB_D+ signal
7	USB_D- white	Input/Output	USB_D- signal

